



PRINTED TEXTILES AND FRAMES

Easy assembly in 3 steps

Aluminium frames for **fabric prints with a silicone border** have now become the standard for visual communication whether backlit or not, both in small retail outlets and in the world of interior decoration, as well as in public places such as airports, stations and shopping centres.

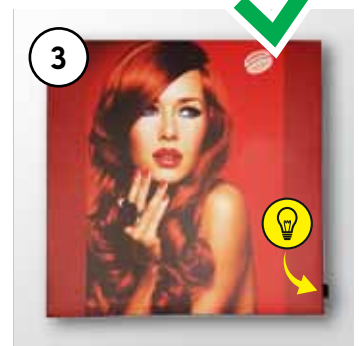
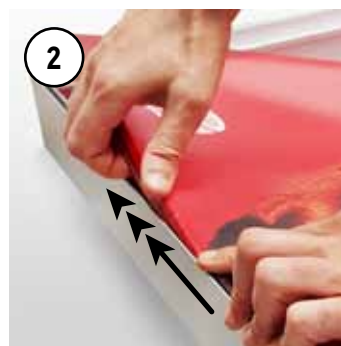
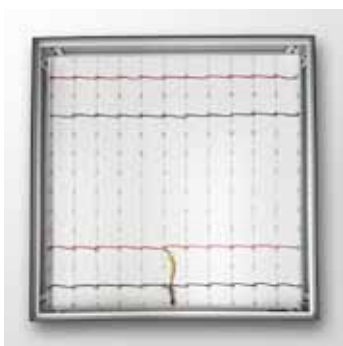
Below we explain how to mount this type of print in just a few simple steps:

- 1 Firstly, it's best to start from one of the corners.**
Insert the two silicone edges as shown in the image below. The same procedure applies to all the other corners of the frame.
- 2 After fixing each corner, proceed to insert the silicone border along the sides.** Once you have finished one side and reached another corner, proceed as for step 1 and then repeat the procedure for all sides and all subsequent corners.
In the meantime, **make sure that the print is well-fixed and tight.**
- 3 After having carefully inserted all sides and all corners as shown in steps 1 and 2, that's it!**
Make sure that the print is well spread, that the edges are firmly in the grooves of the frame and that there are no wrinkles at the sides and corners. If this is the case, repeat steps 1 or 2.



SMART IDEA!

To ease the extraction of the print, you can sew on a sturdy tab at one corner. In this way, you'll be able to remove the print from the frame at any time and replace it with another one in just a few minutes.



Was this guide helpful?

YOUR OPINION MATTERS! Email us at salescare@guandong.eu

